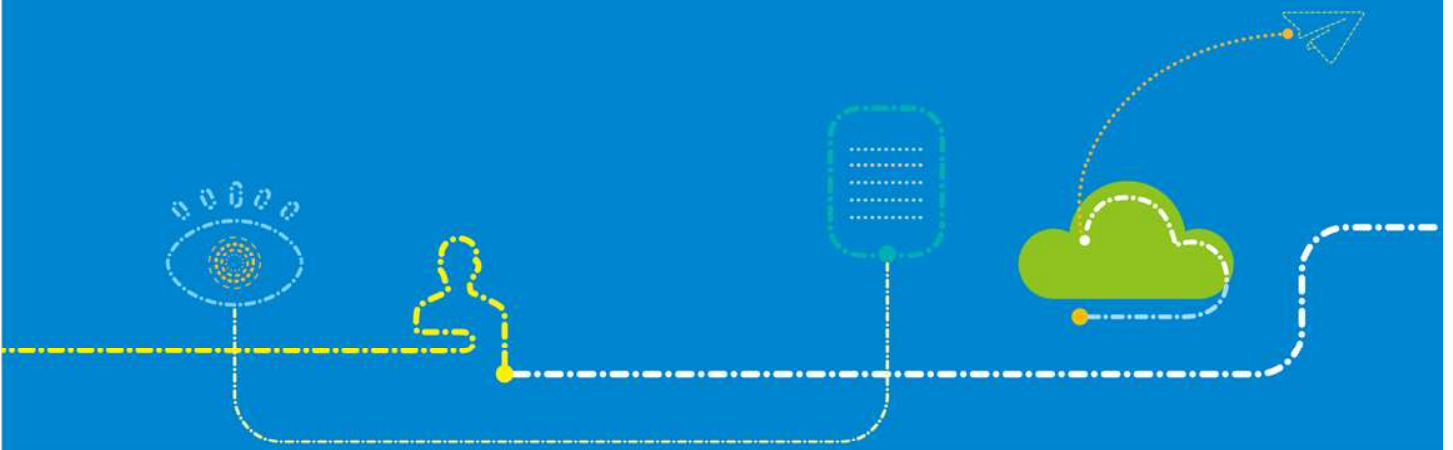


ZTE GPON ONT Datasheet



ZXHN F601 V6.0 Datasheet

ZXHN F601 v6.0 is a GPON Optical Network Terminal designed for FTTH scenario. It provides high-performance forwarding capabilities to ensure excellent experience with Internet and HD video services. It has a small, smart appearance and green, energy-saving advantage.

GPON Interface

- Optical port: 1 x GPON interface (SC/APC)
- Transmission Distance: 0 ~ 20km
- Transmit rate: 2.488Gbps downstream; 1.244Gbps upstream

User Network Interface

- 1 x 10/100/1000Base-T
- Half/full duplex; Auto MDI/MDIX; Auto negotiation

Optical Module

- Wavelength:
Receiving: 1480~1500 nm
Transmitting: 1290~1330 nm
- Receiving Sensitivity: -28dBm
- Transmitting Optical Power: 0.5~5dBm

Physical Performance

- Typical Power consumption: 3W
- Dimensions: 110mm(W) x 90mm(H) x 53mm(D)
- Working temperature: 0°C ~ 40°C
- Working humidity: 5% ~ 95%
- Weight: about 190g
- Power supply: 12V DC
- Mounting mode: Desktop/Wall mounting



Main Function

- Supported service: Internet, IPTV
- GPON: 8 T-CONTs, 32 GEM Ports
- VLAN: 802.1Q, 802.1P, 802.1ad
- MAC address table: 256
- Multicast: IGMP v1/v2/v3 Snooping
- Multicast group: 256
- QoS: service flow classification based on physical port, Ethernet type; ingress rate limit; egress shaping
- Management: local web management, OMCI